

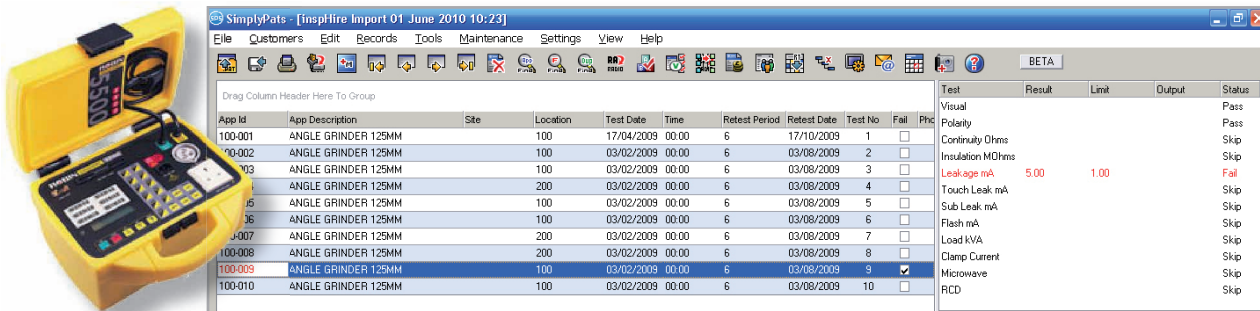


inspHire has partnered with SimplyPats to offer you a simple integration to update your PAT test results into your inspHire hire management solution. An automated link between SimplyPats and inspHire transfers all your test data, eliminating all manual processes saving you time and improving efficiency.

Why SimplyPats?

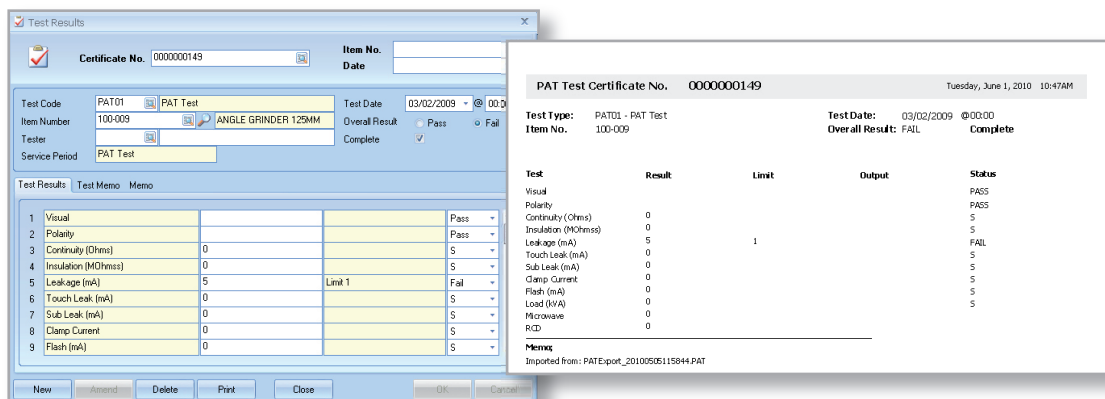
At inspHire we believe in integrating with other 'best of breed' solutions and that's why we have selected SimplyPats. SimplyPats is a tried and tested product with links to most of the leading devices on the market; it has a rich feature set but is easy to use and overall one of the best PAT software packages available.

SimplyPats acts as middleware between inspHire and many PAT testing devices such as Seaward, Metrel and Transmille, cutting out days of manual entry and collating all of your test results in inspHire together with the rest of your asset information giving you a complete history of equipment from purchase, rental and right through to all safety tests.



With SimplyPats integration inspHire will:

- Flag items that need testing.
- Prevent untested equipment from going out on hire.
- Alert you when equipment tests are due or overdue.
- Automatically create certificates to related equipment (pass or fail).
- Track history of PAT tested equipment.
- Log full history of all tests for Health and Safety requirements.
- Reprint test certificates as required.



SimplyPats is an additional module powered by a third party supplier. Contact your Account Manager now for more information about prices and the savings you can make.